

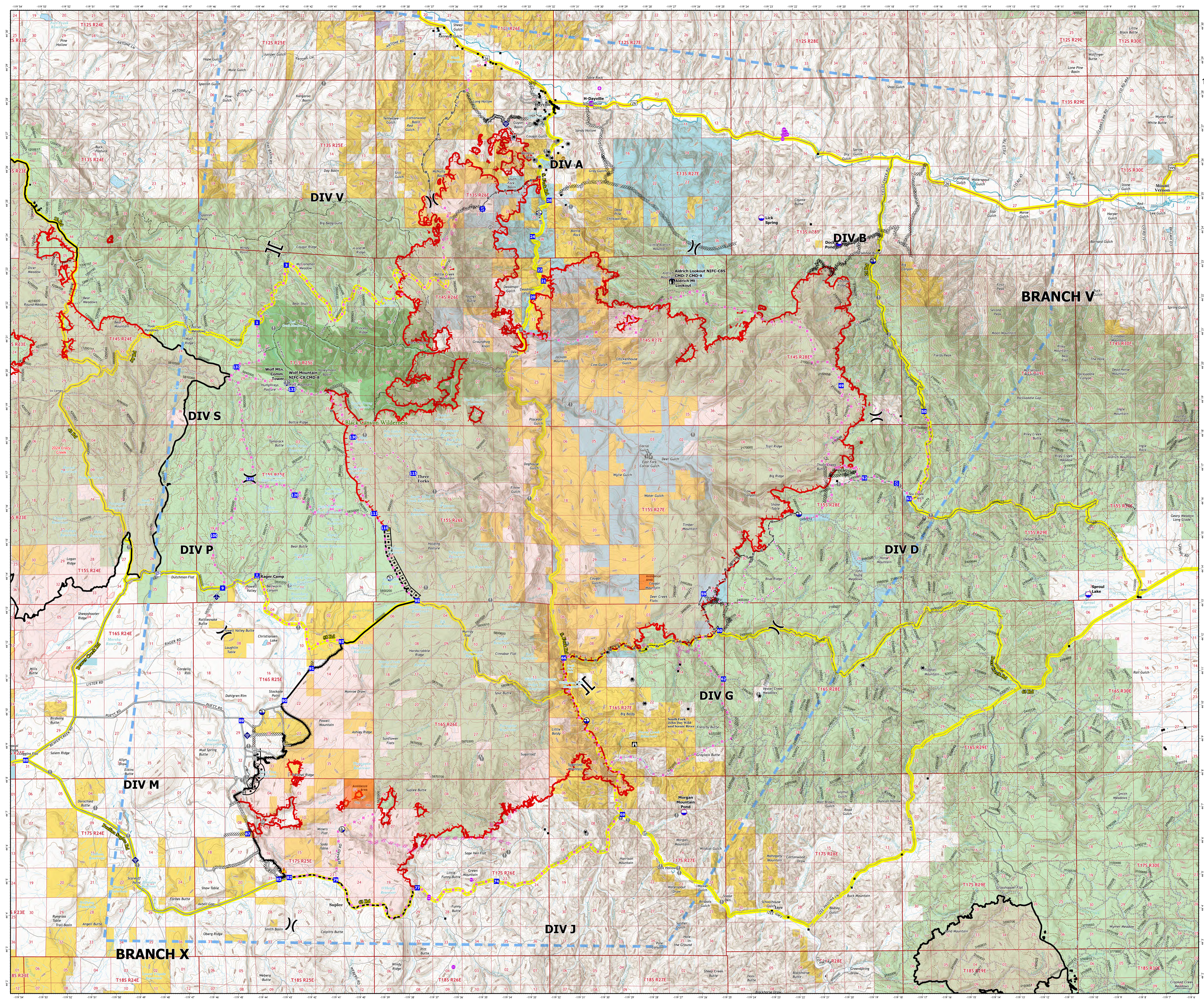
# Operations Map

## Rail Ridge Fire

### OR-PRD-000761

September 10, 2024

157,759 Acres on 9/9/1014 | 23:57



- Structures
  - Helipad
  - Division Break
  - Branch Break
  - Drop Point
  - Camp
  - Staging Area
  - Lookout
  - Value at Risk
  - Gate
  - Mobile Weather Unit
  - Internet Access
  - Repeater
  - Safety Zone
  - Hazard
  - Dip Site
  - Draft Site
  - Pump
  - Water Tank
  - Lightning Strikes (Last 72 Hours)
  - 24-48 N
  - 24-48 P
  - 48-72 N
  - Completed Burnout
  - Completed Dozer Line
  - Completed Hand Line
  - Completed Road as Line
  - Planned Dozer Line
  - Planned Road as Line
  - Proposed Line
  - Access Route
  - Temporary Flight Restriction
  - Contained
  - Uncontained
  - Wildfire Daily Fire Perimeter
  - Avoidance Areas
- #### Roads
- Secondary Hwy
  - Local Connector
  - Local Road
  - Trail
- #### National Forest System Roads
- Paved Road
  - Gravel Road, Suitable for Passenger Car
  - Road, Not Maintained for Passenger Car
  - National Forest System Roads closed to motorized uses
- #### Ownership
- Bureau of Land Management (BLM)
  - National Park Service (NPS)
  - State
  - US Forest Service (USFS)
  - Private

0 1/4 1/2 1 1 1/2 2  
Miles

0 1/2 1 2 3 4  
Kilometers

1:60,000